

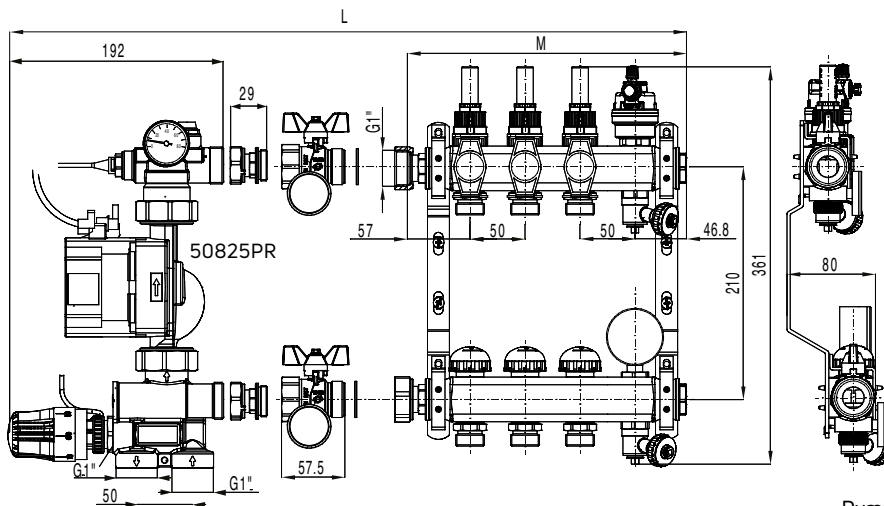


PREMIUM MANIFOLDS

The MYSON FLOORTEC underfloor heating manifold is the central point to most underfloor heating systems. The manifold is responsible for distributing mixed water provided by the manifold control centre to each heating circuit.



Premium manifold & pump pack - manifold dimension details 2-12 port

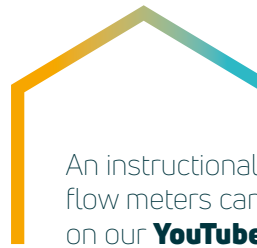


Number of Ports	Manifold Length(M) (±1mm)	Total Length(L) (±1mm)
2	204	454
3	254	504
4	304	554
5	354	604
6	404	654
7	454	704
8	504	754
9	554	804
10	604	854
11	654	904
12	704	954

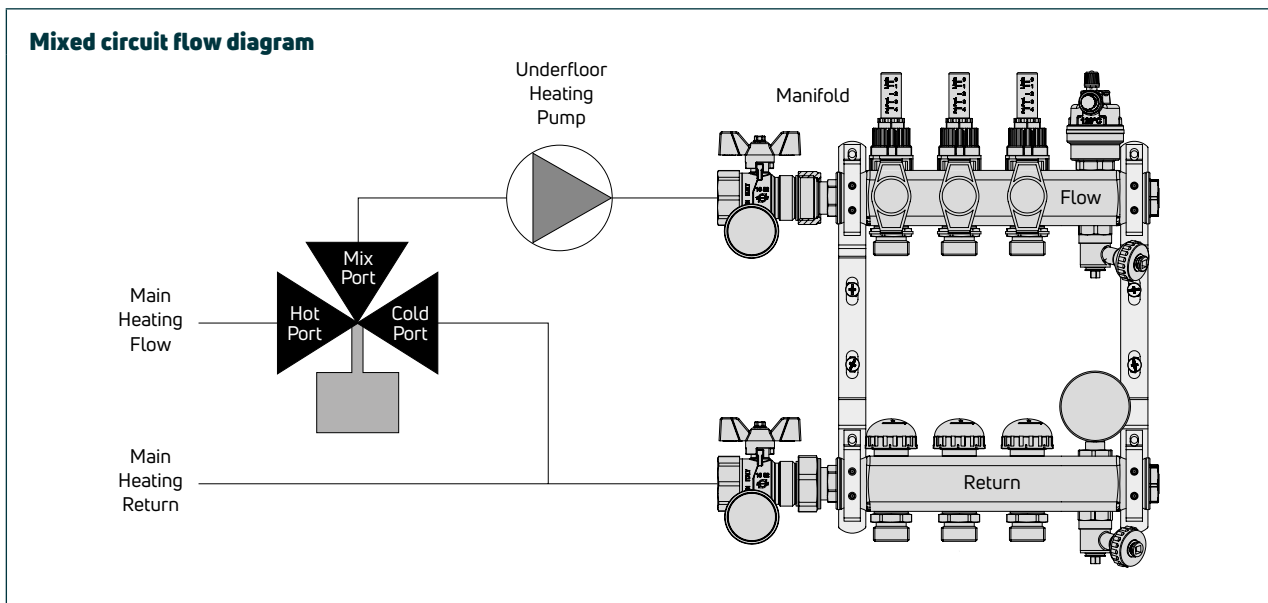
Pump pack and manifold sold separately.

MYSON have introduced their premium manifold as part of the complete bespoke system that is more compact, easier to use, and comes complete with all fittings and fixtures.

It is neat and compact in size and has a number of features and benefits that make it one of the leading manifolds on the market.



An instructional video for flow meters can be viewed on our **YouTube channel**



 **DELIVERY**
2 - 5 working days.

Premium manifolds

Description	Order Code
2 port Premium Manifold	99302PR
3 port Premium Manifold	99303PR
4 port Premium Manifold	99304PR
5 port Premium Manifold	99305PR
6 port Premium Manifold	99306PR
7 port Premium Manifold	99307PR
8 port Premium Manifold	99308PR
9 port Premium Manifold	99309PR
10 port Premium Manifold	99310PR
11 port Premium Manifold	99311PR
12 port Premium Manifold	99312PR
Pipe Bend Support 14-17mm	50070
Pipe Bend Support 18-23mm	50071
3/4" Blanking Cap	53084

Adaptors

Manifold Coupling for 17 x 2mm Pex	50114
Straight Coupling for 17 x 2mm Pex	50010
Manifold Coupling for 14 x 2mm Pex	50019
Straight Coupling for 14 x 2mm Pex	50020
Manifold Coupling for 20 x 2mm Pex	50113
Straight Coupling for 20 x 2mm Pex	50011
Manifold Coupling for 16 x 2mm Multi-layer	53033
Straight Coupling for 16 x 2mm Multi-layer	53032
15mm Copper Adaptor	40213
14mm x 1/2" Male Iron Adaptor	50115
17mm x 1/2" Male Iron Adaptor	50116
Coupling Central Core	50009
Manifold Coupling for 12 x 2mm Pex	50118
Straight Coupling for 12mm x 1/2" Male Iron Adapter	50013
1" Straight Swivel Adaptor	99329PR



PREMIUM PUMP PACK

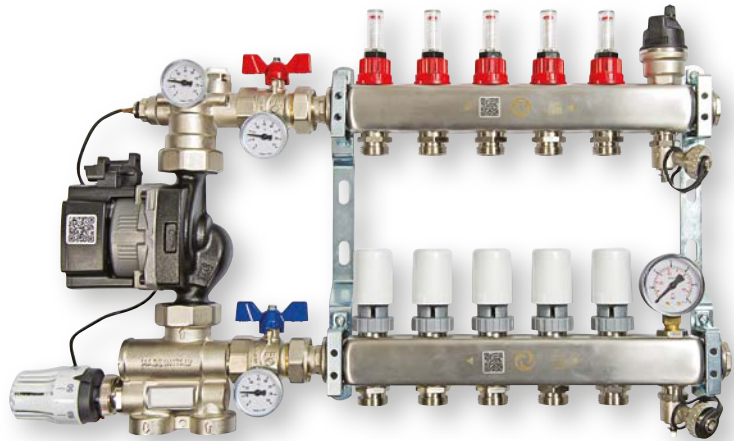
The next generation pump pack from MYSON FLOORTEC works alongside the premium manifold to control the underfloor heating system, allowing it to work at a lower flow temperature.



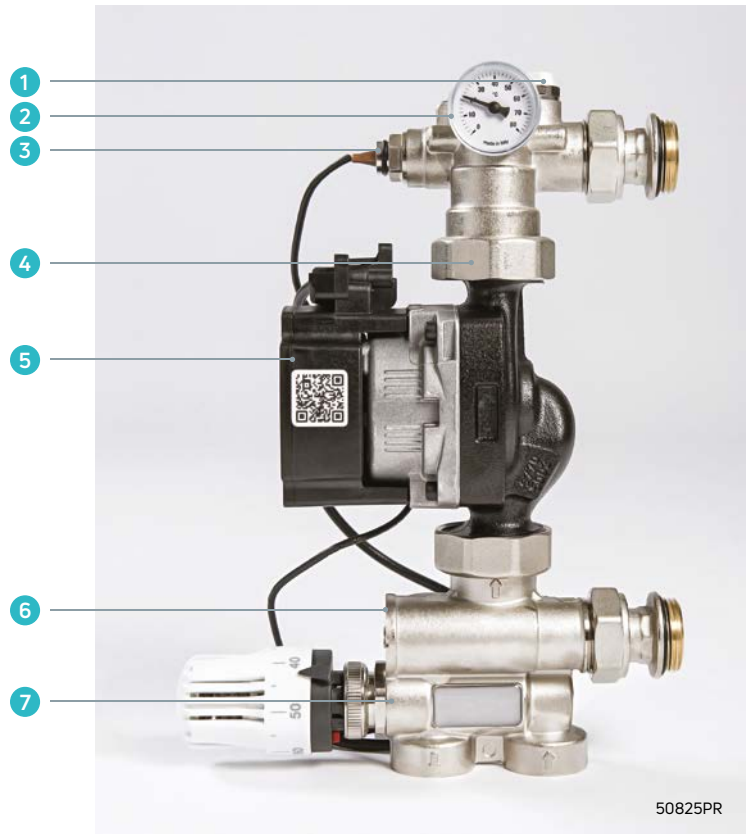
50825PR

The pump pack is compatible with all MYSON manifolds, including the leading premium manifolds and is easily installed.

The fully assembled premium pump pack has all the advantages of before, including a high efficiency circulating pump which now comes assembled with a thermostatic mixing valve complete with integral non-return valve and flow regulating valve ideal for balancing large systems.



99305PR



50825PR

- 1 Manual air vent
- 2 0-80°C Temperature gauge
- 3 Remote sensing probe
- 4 Non-return valve
- 5 Grundfos UPM3 high efficiency circulating pump
- 6 Flow increase valve
- 7 Thermostatically controlled mixing valve

 **DELIVERY**
2 - 5 working days.

Description	Order Code
'A' Rated Pump Pack	50825PR
'A' Rated Single Zone Control Unit	50810A
Y-Splitters (Pair)	53036VN
22mm Mixing Valve	52014